

# CGI Mini

Design Guide: Wall Cladding

# CGI Mini Design Guide: Wall Cladding

## The Art of Cladding

Sculpt an urban masterpiece, with the clean modern lines of Stratco CGI Mini. The visually attractive profile of CGI Mini makes it an ideal choice for use on walls, awnings, ceilings and soffits. It can be used as a feature, to break-up space or create interest. CGI Mini is popular for domestic use, and has also gained popularity within the interior design and shop fitting industry and its interesting profile can be used to great effect.

CGI Mini is available unpainted, or a wide range of single and double sided, pre-painted colours are available to compliment any environment.

## Form and Function

The low ribs that form the CGI Mini profile have a height of only 6mm, which enhances the materials visual appeal when it is used against flashing or capping. This low rib height also allows CGI Mini to have an 825mm coverage, which reduces the number of sheets that you need to install, and provides greater economy.

CGI Mini sheets have a maximum length of 6000mm and can be custom cut to suit your requirements.

For information about minimum lengths and availability, please contact Stratco. CGI Mini has a Zinc/Al coating, and you can choose from three base metal thicknesses of .35mm, .42mm and .48mm. Each thickness has different spanning capabilities. CGI Mini has a material designation of AS 1397/G550 AZ150 (550 MPa minimum yield stress, 150g/m<sup>2</sup> minimum coating mass). Pre-painted steel complies with AS/NZS 2728:1997.

## Typical Applications

CGI Mini is an ideal material for walling applications, as well as a wide variety of internal applications. CGI Mini is often used for ceiling work, because it can be easily transported and installed, and requires only a simple angled flashing to provide a clean, professional finish.

The simple stylish look of CGI Mini, combined with today's modern colours is an ideal solution for designers and owners with flair and imagination. Internal walls are brought to life with the addition of CGI Mini; interesting effects can be achieved when the panels are run at different angles, creating new textures of light and shade.

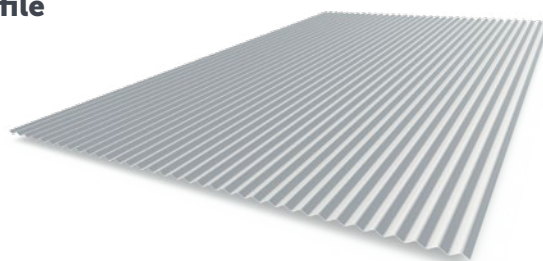
CGI Mini is not suitable for roofing applications due to its low rib height. Entry of water through the side laps may also be possible.

CGI Mini allows the designer to add a stylised surface that is full of character with very little effort. It can be found applied to artwork, indoor furniture, fencing, as a cladding to enhance the face of a bar, and in both domestic and commercial settings. Used internally it is strong, has an excellent lifespan, and is easily applied with special ripple self drilling and tapping screws.

## Spans

The spans shown in Table 2.0 are suitable for buildings in non-cyclonic conditions and are up to 8.5m high. Spans are based on a maximum wind classification of N3 (W41). If these conditions do not apply to your area, please seek advice from your nearest Stratco outlet.

## Profile



## Material Specifications

Table 1.0

Material Properties	Finish	0.35 BMT	0.42 BMT	0.48 BMT
Total Coated Thickness (TCT) mm	Zinc/Al	0.40	0.47	0.53
	Colour	0.43	0.50	0.56
Mass (kg/linear metre)	Zinc/Al	2.74	3.26	3.70
	Colour	2.79	3.32	3.76
Mass (kg/square metre)	Zinc/Al	3.32	3.95	4.48
	Colour	3.39	4.02	4.56
Yield (square metre/tonne)	Zinc/Al	300.8	253.1	222.9
	Colour	294.8	248.8	219.5
Tensile Strength (MPa)	Zinc/Al & Colour	G550	G550	G550
Width Coverage (mm)	Zinc/Al & Colour	825	825	825
Sheet Tolerances (mm)	Length & Width	±15 ±4	±15 ±4	±15 ±4

## Spans

Table 2.0 - Maximum Recommended Spans for Walling (mm) - Determined by Wind Speeds for Non Cyclonic Areas

Span Type	Walling (BMT)		
	0.35mm	0.42mm	0.48mm
Single Span	800	900	1000
End Span	900	1000	1100
Internal Span	1000	1200	1300

## Maintenance Requirements

The performance of CGI Mini over time is dependant on the correct application of the product as outlined in this brochure, on correct product selection, and on maintenance suitable for the environment in which the product is to perform. It is important that screws have the same life expectancy as the CGI Mini sheeting.

The use of CGI Mini should comply with the specifications set out in SAA HB39-1997 'Installations code for metal roofing and wall cladding' published by Standards Australia, and users should first acquaint themselves with this publication.

It is recommended that this brochure is read with the 'Selection, Use & Maintenance of Stratco Steel Products' brochure.

## Fixing Recommendations

The following recommendations apply to non-cyclonic areas.

It is best to use at least two people when installing CGI Mini. Ensure the supporting structure is as rigid and flat as possible. Sheets should be overlapped by a minimum of one and a half corrugations. Extra care must be paid during installation to ensure a uniform and even finish is achieved.

When installing on a wall, the sheets should be placed with the corrugations running vertically, horizontally, or at an angle. Fasteners should be spaced in accordance with the maximum spans in Table 2.0 and fixing recommendations shown below. The sheet should be fixed to all battens and studs that make contact with it, to prevent any noise created when the sheets flex from pressure changes in the building.

To install CGI Mini, work out how many sheets are required to cover the area, ensuring that the sheets are overlapped with equal spacings. Begin fixing the sheet at the centre of one edge and work out toward the other end of the sheet.

Place each row of fasteners parallel with the first row. If the sheet is 3000mm long or over, be careful to ensure the sheet remains straight along its top and bottom edge.

When installing the screws, do not flatten the corrugations through excessive force, as this will make the sheet wider, and therefore effect your measurements.

End laps are not recommended for aesthetics, but they are possible if required.

Side lap fixing with 3.2mm sealed rivets is recommended at mid-span when spans exceed 900mm.

If fixing over an insulation blanket the next standard screw length to that indicated may be required with minimum 25mm timber embedment to be maintained.

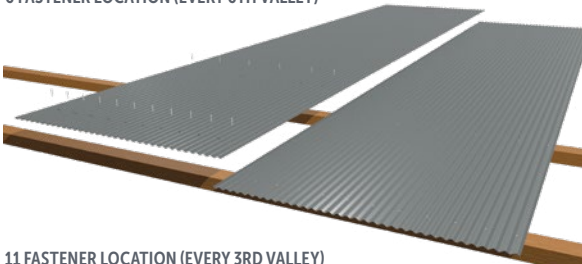
CGI Mini may be spring curved to a radius as low as 2000mm. However, it is recommended that the support spacings be reduced to the equivalent of single spans for radii of 6000mm or less - refer to Table 2.0.

### Walling Laying Procedure

» PREVAILING WIND

LAYING DIRECTION «

6 FASTENER LOCATION (EVERY 6TH VALLEY)



11 FASTENER LOCATION (EVERY 3RD VALLEY)

### Fastener Size Selection

#### Walling - Pan Fixing

Fixing To Steel



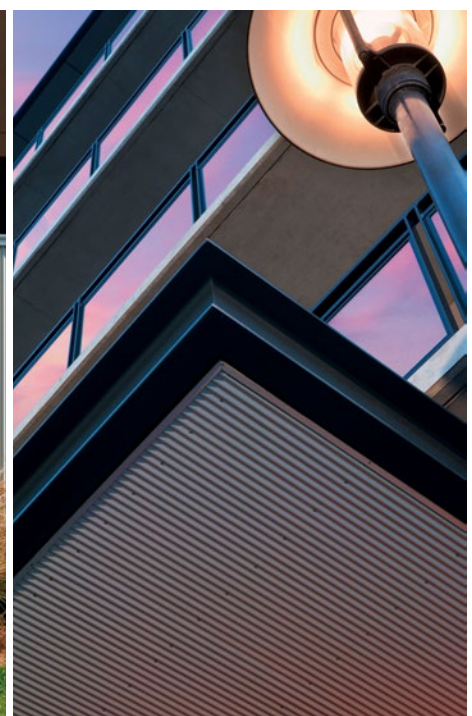
**10 x 20mm**  
Ripple self drilling  
and tapping screw

Fixing To Timber



**10 x 30mm**  
Type 17 ripple self drilling  
and tapping screw

*The minimum allowable steel support thickness is 0.75mm BMT, G550.*





« SCAN THIS QR CODE TO FIND A STRATCO NEAR YOU

1300 155 155  
stratco.com.au

All brands and logos/images accompanied by © or ™ are trade marks of Stratco (Australia) Pty Limited. © Copyright June 2004

How To.

